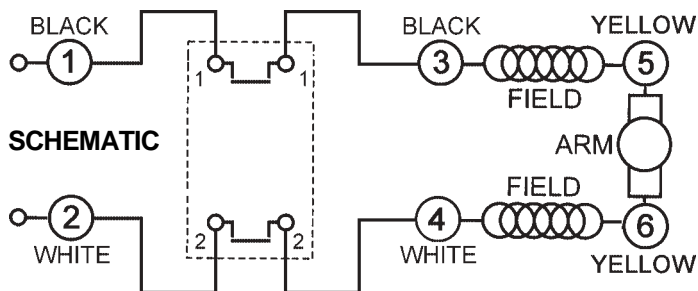
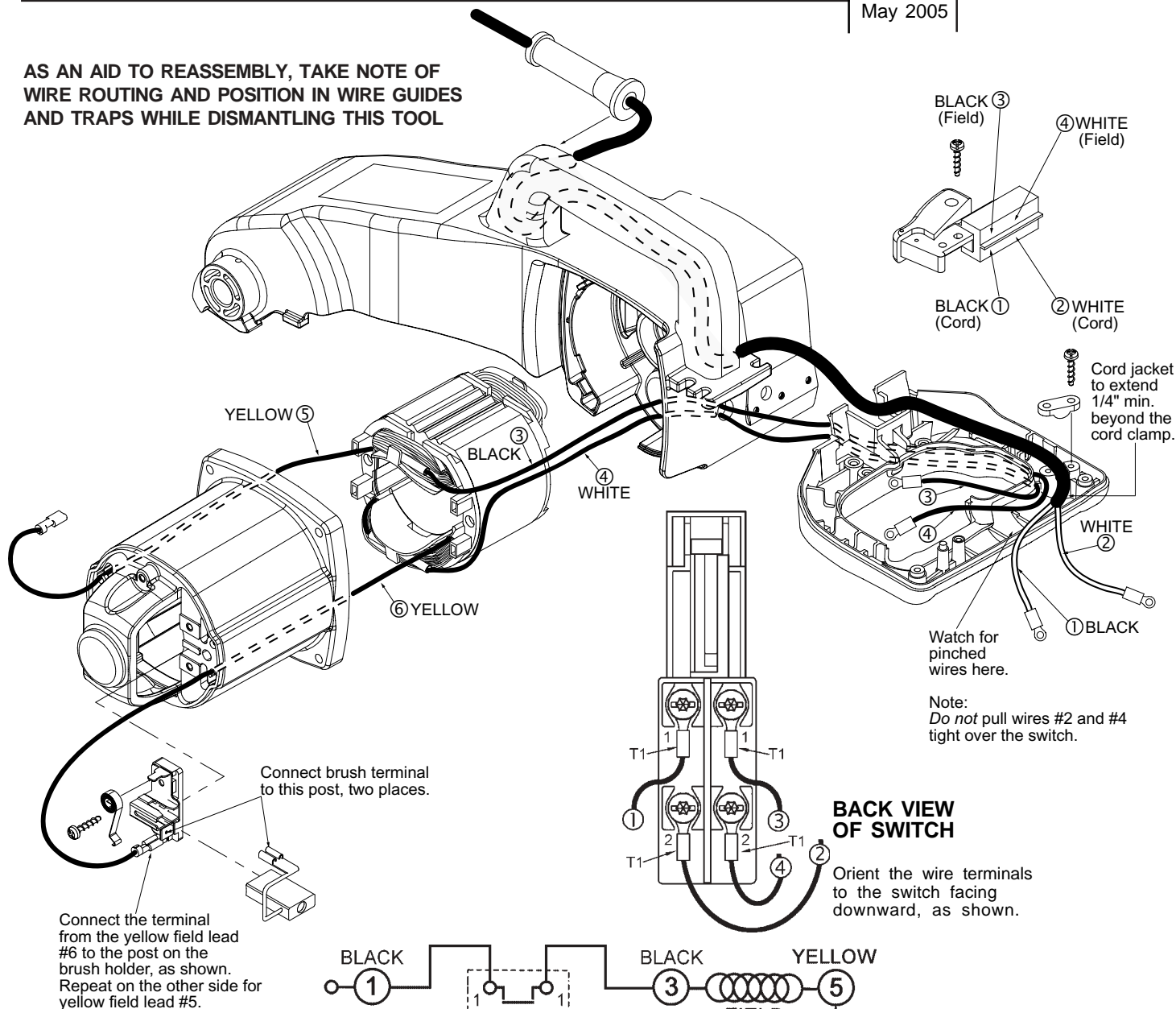


WIRING INSTRUCTIONS

TITLE	CUT-OFF MACHINE	BULLETIN
MILWAUKEE ELECTRIC TOOL CORP. 13135 WEST LISBON RD. BROOKFIELD, WIS.	DATE	58-01-0575
	May 2005	

AS AN AID TO REASSEMBLY, TAKE NOTE OF WIRE ROUTING AND POSITION IN WIRE GUIDES AND TRAPS WHILE DISMANTLING THIS TOOL



WIRING SPECIFICATIONS					
Wire No.	Wire Color	Origin	Gauge	Length	Terminals, Connectors and 1 or 2 End Wire Preparation
1	Black	Cord Set	14	-----	Component of cord set. Strip 1/4" for T1.
2	White	Cord Set	14	-----	Component of cord set. Strip 1/4" for T1.
3	Black	Field	14	-----	Component of the field. Strip 1/4" for T1.
4	White	Field	14	-----	Component of the field. Strip 1/4" for T1.
5	Yellow	Field	14	-----	Component of the field.
6	Yellow	Field	14	-----	Component of the field.

BULK LEAD WIRE - BULLETIN NO. 58-01-0003

TERMINAL DESCRIPTION		
Code	Part No.	Qty.
T1	23-74-2430	4